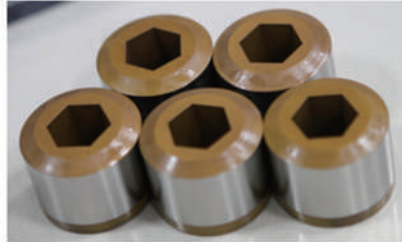
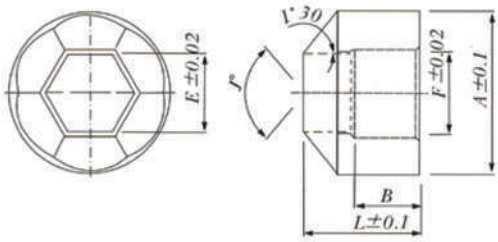




6. TRIMMING DIE



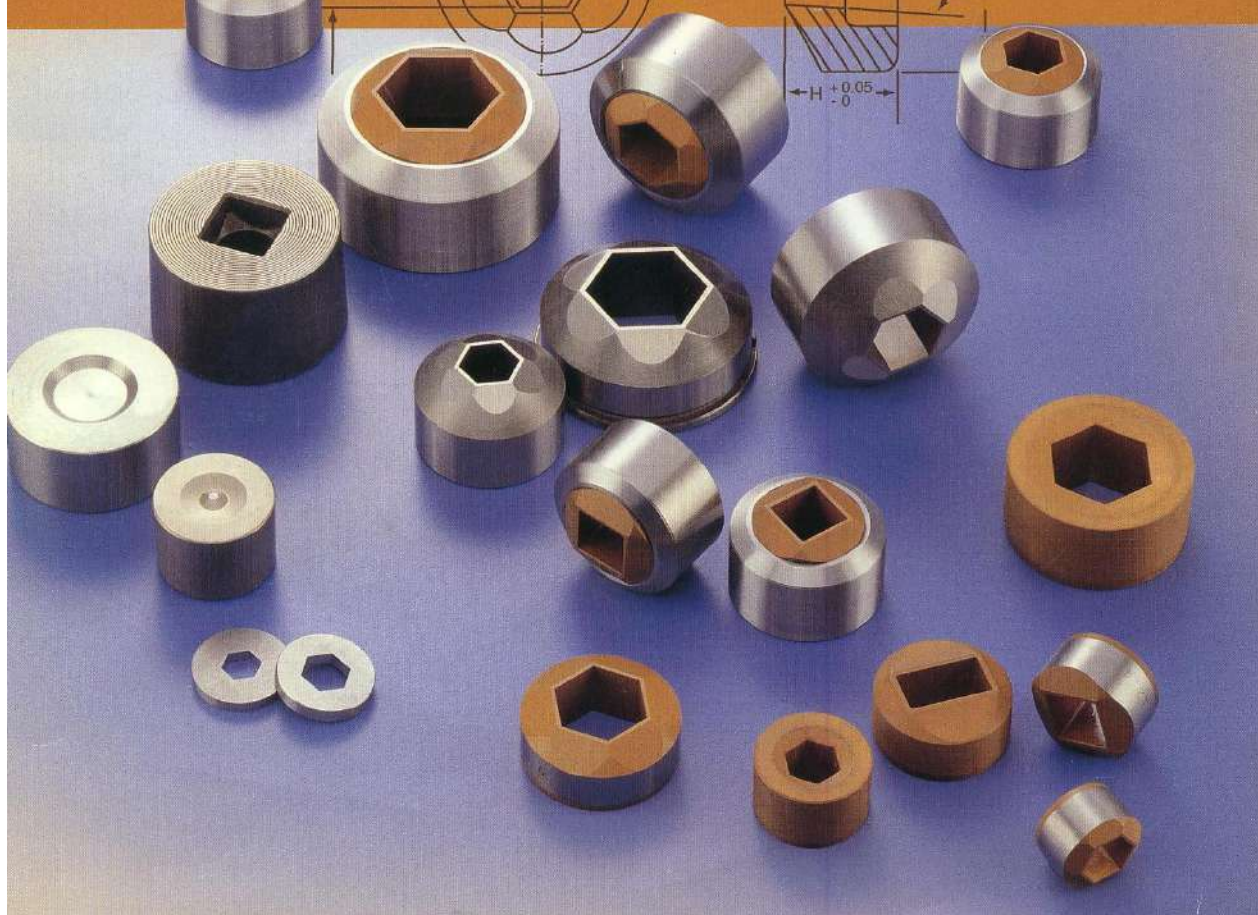
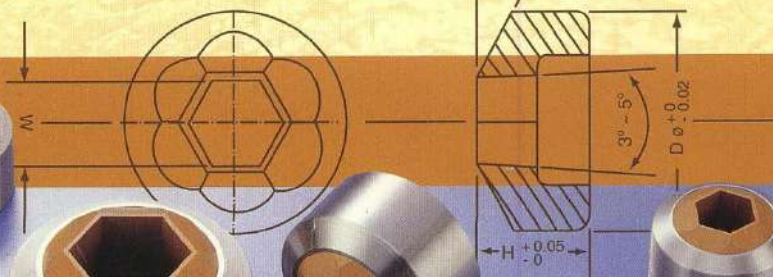
Trimming Dies Specification

300 x 20	350 x 23	420 x 23	450 x 28	540 x 32	600 x 40	700 x 50	740 x 40	Basic Size	Tolerance	Nominal Size	Specified
▲								6.80	+0.04 / +0.02	JIS M4	6.80~7.00
▲								7.80	+0.05 +0.03	JIS M5	7.80~8.00
▲	▲							9.80		JIS M6	9.80~10.00
▲	▲							10.88	+0.06 +0.04	ANSI 1/4	10.88~11.12
	▲							11.75		JIS M8 (Small)	11.75~12.00
	▲							12.43		ANSI 5/16	12.43~12.70
	▲	▲						12.75		JIS M8	12.75~13.00
	▲	▲						13.75		JIS M10 (Small)	13.75~14.00
		▲						14.00	+0.07 +0.05	ANSI 3/8	14.00~14.27
		▲						15.55		ANSI 7/16	15.55~15.87
		▲	▲					16.75		JIS M10.M12 (Small)	16.75~17.00
			▲					18.65	+0.08 +0.06	JIS M12.M14 (Small)	18.65~19.00
			▲					18.70		ANSI 1/2	18.70~19.05
			▲	▲				20.27		ANSI 9/16	20.27~20.62
			▲	▲				21.65		JIS M14.M16 (Small)	21.65~22.00
				▲	▲			23.42	+0.09 +0.07	ANSI 5/8	23.42~23.82
				▲	▲			23.65		JIS M16.M18 (Small)	23.65~24.00
				▲	▲			26.65	+0.10 +0.08	JIS M18.M20 (Small)	26.65~27.00
				▲	▲			27.94		ANSI 3/4	27.94~28.57
					▲	▲		29.65		JIS M20.M22 (Small)	29.65~30.00
						▲		31.60	+0.11 +0.09	JIS M22.M24 (Small)	31.60~32.00
						▲	▲	32.63		ANSI 7/8	32.63~33.32
						▲	▲	35.60	+0.12 +0.10	JIS M24.M27 (Small)	35.60~36.00
						▲	▲	37.32		ANSI 1"	37.32~38.10

MATERIAL: R3. R4
H55. H9. ASP30



25° 一般碳素鋼 Ordinary Carbon Steel
30° 不銹鋼 Stainless Steel



單位：mm

Dø x H								W		螺栓規格	
30 ø x 20	35 ø x 23	42 ø x 23	45 ø x 28	54 ø x 32	60 ø x 40	70 ø x 50	74 ø x 40	基本尺寸	公差	稱呼尺寸	對邊尺寸
▲								6.8	+0.04 +0.02	JIS M4	6.80 ~ 7.00
▲								7.8	+0.05	JIS M5	7.80 ~ 8.00
▲	▲							9.8		+0.03	JIS M6
▲	▲							10.88			ANSI 1/4
	▲							11.75	+0.06	JIS M8 (小形)	11.75 ~ 12.00
	▲							12.43			ANSI 5/16
	▲	▲						12.75	+0.04	JIS M8	12.75 ~ 13.00
	▲	▲						13.75			JIS M10 (小形)
	▲	▲						14.00		ANSI 3/8	14.00 ~ 14.27
		▲						15.55	+0.07	ANSI 7/16	15.55 ~ 15.87
		▲	▲					16.75	+0.05	JIS M10. M12 (小形)	16.75 ~ 17.00
			▲					18.65	+0.08	JIS M12. M14 (小形)	18.65 ~ 19.00
			▲					18.70			ANSI 1/2
			▲	▲				20.27	+0.06	ANSI 9/16	20.27 ~ 20.62
			▲	▲				21.65			JIS M14. M16 (小形)
				▲	▲			23.42	+0.09	ANSI 5/8	23.42 ~ 23.82
				▲	▲			23.65	+0.07	JIS M16. M18 (小形)	23.65 ~ 24.00
				▲	▲			26.65	+0.10	JIS M18. M20 (小形)	26.65 ~ 27.00
				▲	▲			27.94			ANSI 3/4
					▲	▲		29.65	+0.08	JIS M20. M22 (小形)	29.65 ~ 30.00
						▲		31.60		+0.11	JIS M22. M24 (小形)
						▲	▲	32.63	+0.09	ANSI 7/8	32.63 ~ 33.32
						▲	▲	35.60	+0.12	JIS M24. M27小形(小形)	35.60 ~ 36.00
						▲	▲	37.32	+0.10	ANSI 1"	37.32 ~ 38.10